

## Product datasheet for **TA809727**

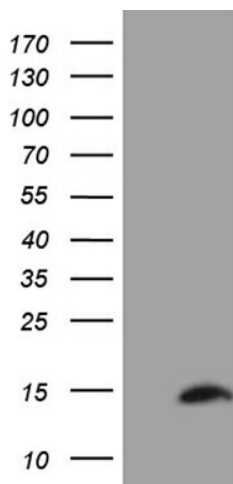
### **SH3BGRL Mouse Monoclonal Antibody [Clone ID: OTI8F7]**

#### **Product data:**

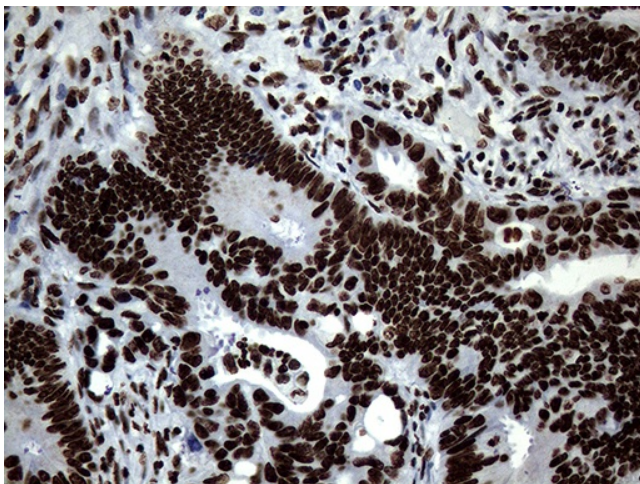
Product Type:	Primary Antibodies
Clone Name:	OTI8F7
Applications:	IHC, WB
Recommend Dilution:	WB 1:2000, IHC 1:150
Reactivity:	Human
Host:	Mouse
Isotype:	IgG1
Clonality:	Monoclonal
Immunogen:	Full length human recombinant protein of human SH3BGRL (NP_003013) produced in E.coli.
Formulation:	PBS (PH 7.3) containing 1% BSA, 50% glycerol and 0.02% sodium azide.
Concentration:	1 mg/ml
Purification:	Purified from mouse ascites fluids or tissue culture supernatant by affinity chromatography (protein A/G)
Predicted Protein Size:	12.6 kDa
Gene Name:	SH3 domain binding glutamate rich protein like
Database Link:	<a href="#">NP_003013 Entrez Gene 6451 Human</a>
Synonyms:	HEL-S-115; SH3BGR

[View online »](#)

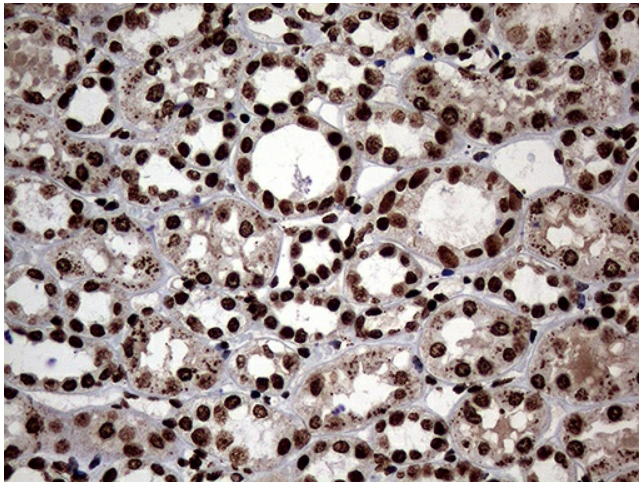
## Product images:



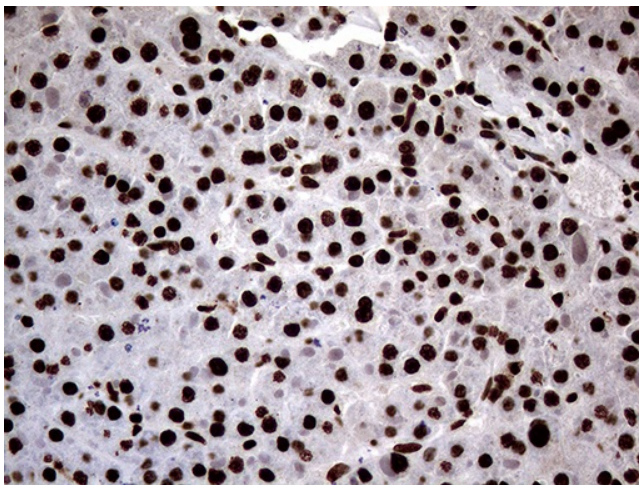
HEK293T cells were transfected with the pCMV6-ENTRY control (Left lane) or pCMV6-ENTRY SH3BGRL ([RC204993], Right lane) cDNA for 48 hrs and lysed. Equivalent amounts of cell lysates (5 ug per lane) were separated by SDS-PAGE and immunoblotted with anti-SH3BGRL (1:2000). Positive lysates [LY418952] (100ug) and [LC418952] (20ug) can be purchased separately from OriGene.



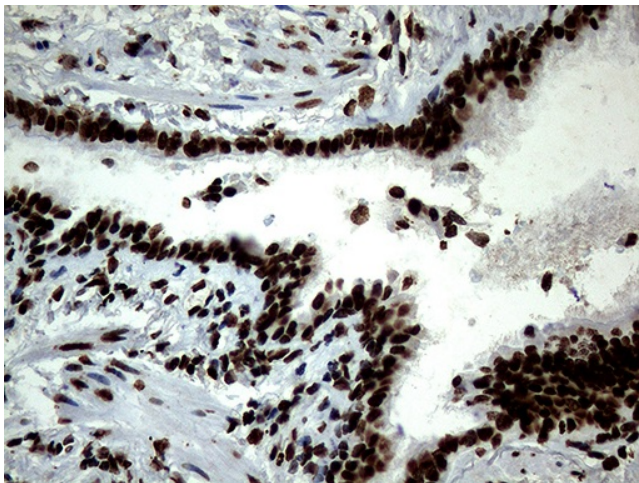
Immunohistochemical staining of paraffin-embedded Adenocarcinoma of Human colon tissue using anti-SH3BGRL mouse monoclonal antibody. (Heat-induced epitope retrieval by 1mM EDTA in 10mM Tris buffer (pH8.5) at 120°C for 3min, TA809727) (1:150)



Immunohistochemical staining of paraffin-embedded Human Kidney tissue within the normal limits using anti-SH3BGRL mouse monoclonal antibody. (Heat-induced epitope retrieval by 1mM EDTA in 10mM Tris buffer (pH8.5) at 120°C for 3min, TA809727) (1:150)

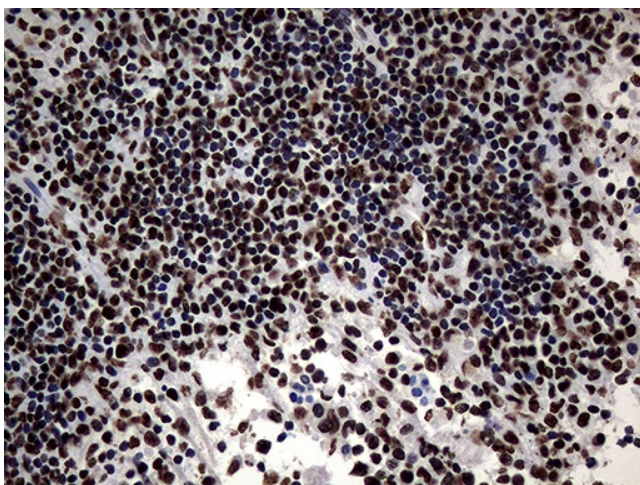


Immunohistochemical staining of paraffin-embedded Carcinoma of Human liver tissue using anti-SH3BGRL mouse monoclonal antibody. (Heat-induced epitope retrieval by 1mM EDTA in 10mM Tris buffer (pH8.5) at 120°C for 3min, TA809727) (1:150)

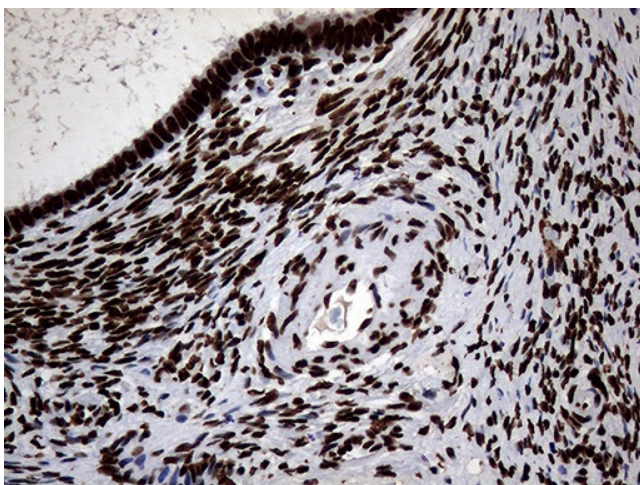


Immunohistochemical staining of paraffin-embedded Human lung tissue within the normal limits using anti-SH3BGRL mouse monoclonal antibody. (Heat-induced epitope retrieval by 1mM EDTA in 10mM Tris buffer (pH8.5) at 120°C for 3min, TA809727) (1:150)

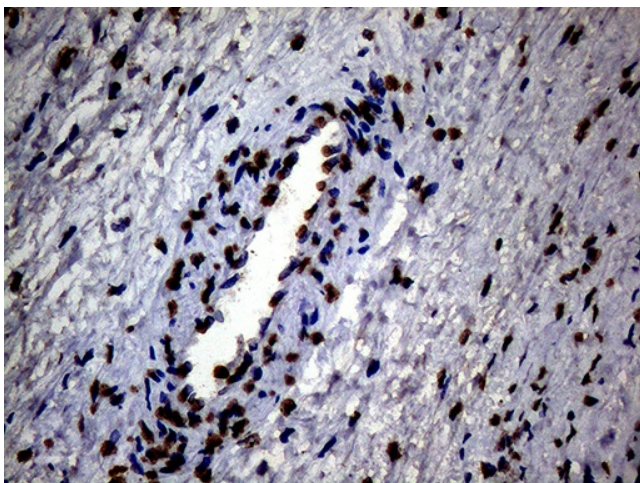




Immunohistochemical staining of paraffin-embedded Carcinoma of Human lung tissue using anti-SH3BGRL mouse monoclonal antibody. (Heat-induced epitope retrieval by 1mM EDTA in 10mM Tris buffer (pH8.5) at 120°C for 3min, TA809727) (1:150)

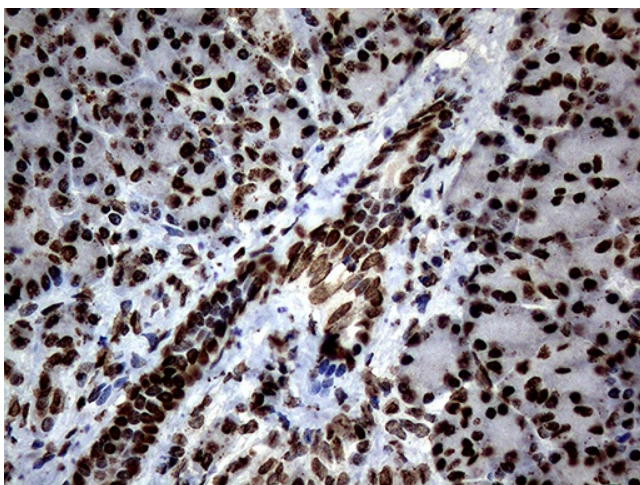


Immunohistochemical staining of paraffin-embedded Human Ovary tissue within the normal limits using anti-SH3BGRL mouse monoclonal antibody. (Heat-induced epitope retrieval by 1mM EDTA in 10mM Tris buffer (pH8.5) at 120°C for 3min, TA809727) (1:150)

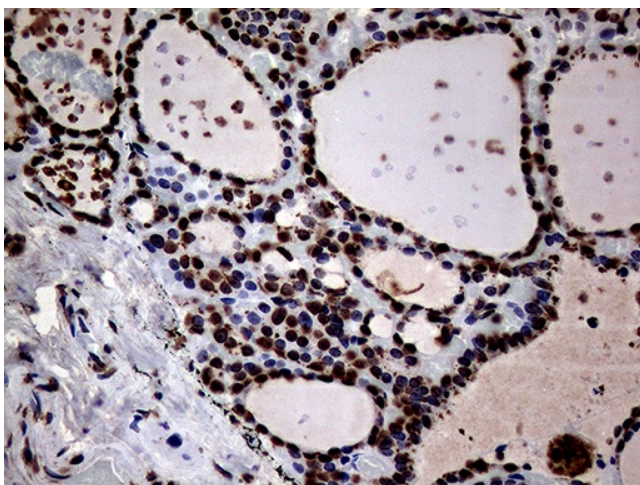


Immunohistochemical staining of paraffin-embedded Adenocarcinoma of Human ovary tissue using anti-SH3BGRL mouse monoclonal antibody. (Heat-induced epitope retrieval by 1mM EDTA in 10mM Tris buffer (pH8.5) at 120°C for 3min, TA809727) (1:150)

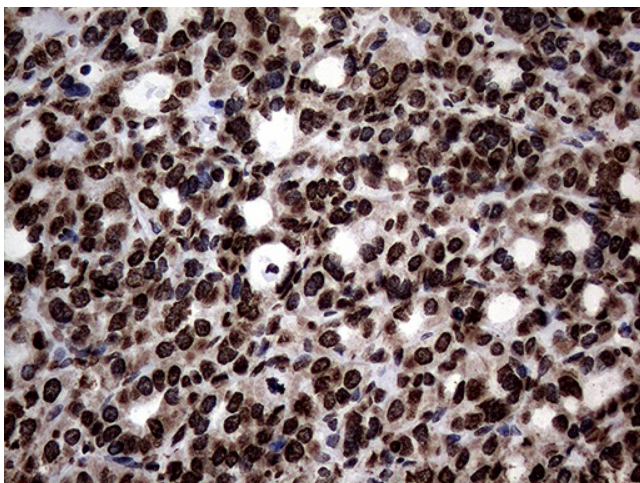




Immunohistochemical staining of paraffin-embedded Human pancreas tissue within the normal limits using anti-SH3BGRL mouse monoclonal antibody. (Heat-induced epitope retrieval by 1mM EDTA in 10mM Tris buffer (pH8.5) at 120°C for 3min, TA809727) (1:150)

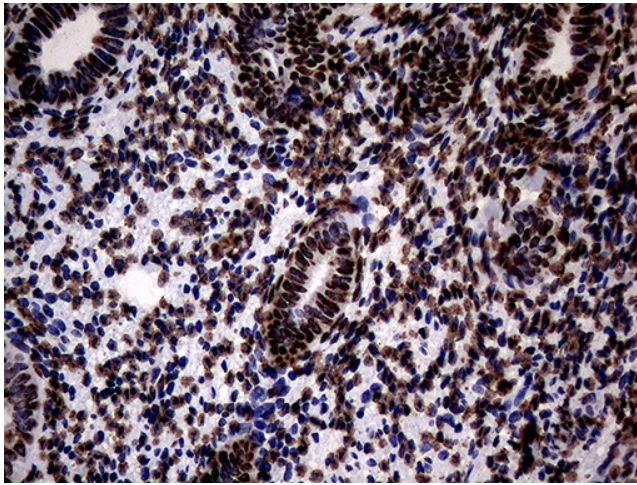


Immunohistochemical staining of paraffin-embedded Human thyroid tissue within the normal limits using anti-SH3BGRL mouse monoclonal antibody. (Heat-induced epitope retrieval by 1mM EDTA in 10mM Tris buffer (pH8.5) at 120°C for 3min, TA809727) (1:150)

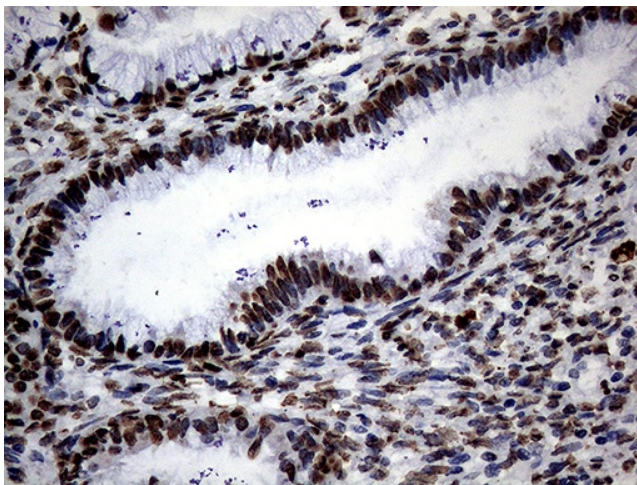


Immunohistochemical staining of paraffin-embedded Carcinoma of Human thyroid tissue using anti-SH3BGRL mouse monoclonal antibody. (Heat-induced epitope retrieval by 1mM EDTA in 10mM Tris buffer (pH8.5) at 120°C for 3min, TA809727) (1:150)

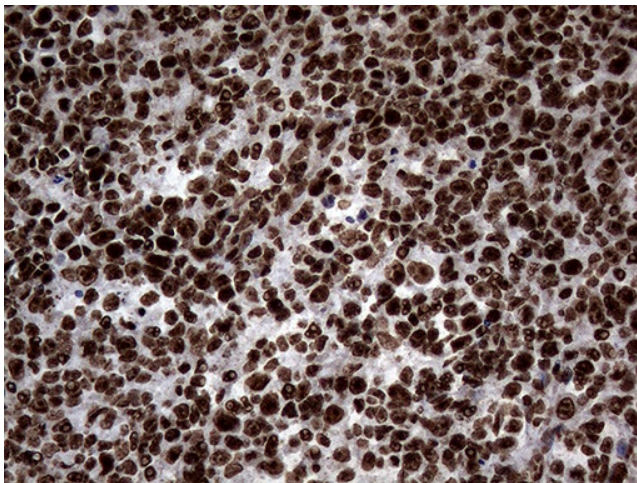




Immunohistochemical staining of paraffin-embedded Human endometrium tissue within the normal limits using anti-SH3BGRL mouse monoclonal antibody. (Heat-induced epitope retrieval by 1mM EDTA in 10mM Tris buffer (pH8.5) at 120°C for 3min, TA809727) (1:150)



Immunohistochemical staining of paraffin-embedded Adenocarcinoma of Human endometrium tissue using anti-SH3BGRL mouse monoclonal antibody. (Heat-induced epitope retrieval by 1mM EDTA in 10mM Tris buffer (pH8.5) at 120°C for 3min, TA809727) (1:150)



Immunohistochemical staining of paraffin-embedded Human lymph node tissue within the normal limits using anti-SH3BGRL mouse monoclonal antibody. (Heat-induced epitope retrieval by 1mM EDTA in 10mM Tris buffer (pH8.5) at 120°C for 3min, TA809727) (1:150)